



Elizabeth North Primary School Term 2 Week 2 2025

Our Vision

Our vision is to inspire a community of learners to achieve personal greatness

2025 Term 2, Week 1



Important dates to remember

- **Thursday 8th May National Indigenous Tennis Carnival and Cultural Learning Day**
- **Friday 9th May Year 3/4 Tackle**
- **Friday 9th May Mother's Day stall**
- **Monday 12th May 3:45pm Governing Council**
- **Thursday 15th May 2.10pm Assembly**
- **Thursday 22nd May 2.10pm Assembly**
- **Friday 23rd May Reconciliation Celebration**
- **Monday 26th May to Tuesday 3rd June National Reconciliation Week**
- **Monday 2nd June to Friday 20th June Dental For Schools**
- **Monday 9th June Public Holiday Kings Birthday**
- **Monday 16th June Governing Council 3.45pm**
- **Thursday 26th June Year 6 Market Day**
- **Thursday 3rd July 2.10pm Assembly**

- Friday 4th July 2pm Early Dismissal Last day of Term 2

Friday 9th May Mother's Day Stall

Friday 23rd May Reconciliation Celebration

Monday 26th May to Tuesday 3rd June National Reconciliation Week

Monday 2nd June to Friday 20th June Dental For Schools

Monday 9th June Public Holiday Kings Birthday

Thursday 26th June Year 6 Market Day

Friday 4th July End of Term 2 Early Dismissal 2pm

Mothers Day Stall



Leadership News

Welcome back to term 2 everyone. We hope that the first week of the new term has started well for you and your children.

Staffing News

At the end of last term, we farewelled Kylie Richards from our preschool after she won a position at Salisbury Downs Preschool. Rebecca Elvy will take up the preschool leader position until the end of the year, which she is very excited about. Hear more from Bec below.

Layla Scholz has been appointed as Room 10 teacher for the remainder of the year, coming across to us from Mawson Lakes Primary. She has been finishing up her contract at Mawson Lakes for the first few weeks, but she will be with us full time from the beginning of next week.

As mentioned last term, we have two new teachers in Year 1, replacing Abby Furness and James Elliott. It has been great to see Olivia Swift and Megan Worthley settle in so quickly to their new roles at our school.

Finally, we thank Tracey Bonner for her SSO work in Room 11 this year, with our students in the disability unit. Tracy will finish at ENPS this week before she takes up an opportunity elsewhere for the remainder of the term. Thank you, Tracey.

Uniform Reminders

Please see attached extract from our dress code policy, highlighting some important points, especially as we head into winter.

Dress Code Expectations

Clothing

- The school colours are predominantly navy blue with a white logo.
- Clothing can be purchased from the Front Office or through the major department stores – the main expectation is that there are no logos, other than the school logo, or stripes/patterns on the clothing.
- Skivvies or long sleeve t-shirts worn under school polo shirts must be navy blue, black or white.
- Long sleeve polo shirts in school colours are acceptable.
- It is expected that students wear black or navy blue pants, jeggings, jeans or shorts without a logo, stripes or sequins and free from rips or tears.
 - Shorts need to be at least mid-thigh length no high cut shorts allowed.
- Navy blue and white checked summer dresses are suitable to wear – girls are encouraged to wear navy blue or black leggings or bike pants underneath the dress. Summer dresses are not available to purchase at the school.
- Hooded jumpers (whether they are navy blue or not) are not allowed due to safety concerns.
- Students are permitted to wear any colour parka/coat to and from school but for students to be permitted to wear it during the day it needs to be either navy blue or black.

Footwear

- For safety reasons students are requested to wear flat shoes, track shoes or enclosed sandals to school. No slip-on shoes, thongs or ugg boots are to be worn at school.

Elizabeth North Preschool



My name is Rebecca Elvy, and I'm excited to introduce myself as the new Preschool Leader. Some of you may recognise me from my teaching role within the school, but I'm especially thrilled to be returning to where my journey began—in preschool! Early learning has always held a special place in my heart, and I'm looking forward to getting to know the preschool children and families as we learn and grow together.

We are delighted to be back at preschool and are engaging in a variety of enriching learning experiences. Our team is dedicated to creating a nurturing and stimulating environment for your children.

We have some exciting events on the horizon, including a visit from the Metropolitan Fire Service (MFS), offering a valuable opportunity for our children to learn about fire safety in an engaging and interactive way. Additionally, we are beginning the transition process for our mid-year intake children as they prepare to move from preschool to school.

Elizabeth North Preschool are accepting Registrations of Interest for preschool for Term 3 2025.



Enrol now for preschool



If your child turns 4:

- **before 1 May**, they're eligible to start preschool in term 1 that year
- **between 1 May and 31 October**, they're eligible to start preschool in term 3 that year
- **after 31 October**, they're eligible to start preschool in term 1 the following year



In South Australia, 'preschool' and 'kindergarten' are the same. Children can attend preschool the year before they start school.

Aboriginal children can access 15 hours of preschool a week from 3 years of age.

Children in care or who have been in care also can access 15 hours of preschool a week from 3 years of age.

At preschool, children learn through play to:

- make friends, share and play with others.
- become confident learners.
- understand their feelings and the feelings of others.
- express their creativity through dance, movement and art.
- develop their physical skills and fine motor skills.
- develop their literacy skills such as listening, speaking and communicating.
- develop maths skills such as counting, measuring, and solving problems.

Government preschools provide specialised support for children, including:

- Bilingual support for children who have English as an Additional Language or Dialect.
- educational support for children with hearing, speech or language impairment and children with developmental delay or disability.

Scan to find out more



education.sa.gov.au/preschool-enrolment

Wellbeing News

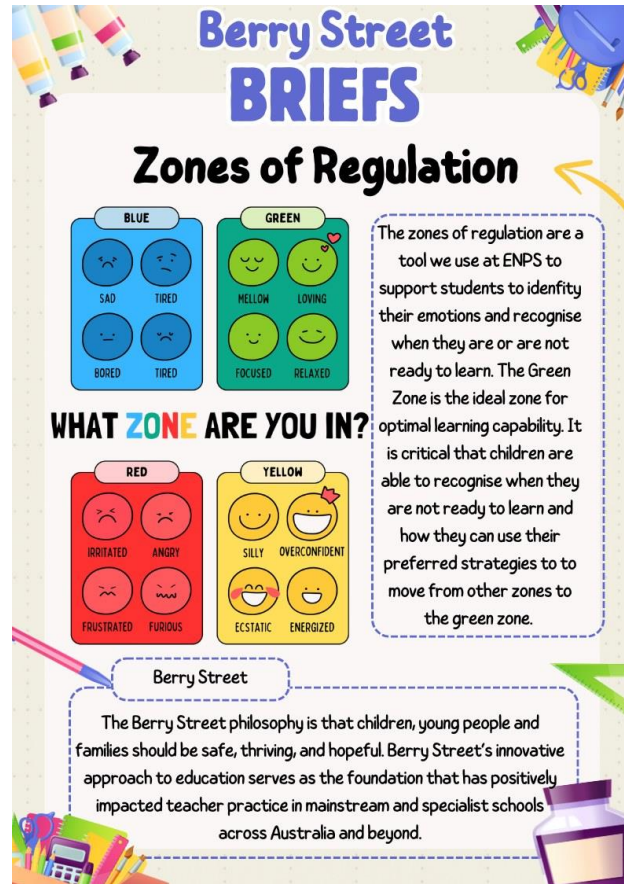


1 - Wellbeing Leader Rosa Fontanarosa



2 - Wellbeing Leader Sarah Williams

Berry Street Briefs



Diamond Award Winners



Last term we celebrated our Diamond Team Point winners. These students have consistently demonstrated the school values and Keys to Success. They have strong attendance and make positive choices in the classroom as well as in the yard. Diamond Award winners receive an iron on diamond on their uniform, a special certificate and can add their name to our Diamond display. Congratulations winners!

Personal Greatness Award Winners



Congratulations to our week 1 winners!

Term 1 Attendance Award Winners



Congratulations to our 3 students who achieved 100% attendance for term 1. We also had almost 200 students who achieved our goal of 95% attendance.

Congratulations to Ethan Rm23, Veronika Rm 20 and Lian Pi Rm 17 all achieving 100% attendance.

Team Chant Competition

TEAM CHANT COMPETITION

Open to Everyone!

Every Team deserves to be heard!

We are hoping to have new chants for our amazing teams in time for Sports Day! We are looking for creative and catchy entries that embody the spirit of each of our teams!

★ TEAMS ★

- Kardi Emus
Strength: Leadership
- Nantu Roos
Strength: Zest
- Ngakudla Sharks
Strength: Teamwork
- Waru Dingoes
Strength: Resilience

GUIDELINES

- Open to all families and students
- Chants must include the English and Koorina names of teams
- Chants must include their character strength
- Chants must not exceed 8 lines
- Try to incorporate an action to go along with the chant (clap/stomp/dance move etc)
- You can enter more than once and for teams other than your own

How to Enter?

Write up your chant and include any actions and give it to your class teacher, Ms Rosa or Mrs Williams

Entries Close 6th June 2025

Dental For Schools

We are again partnering with Dental For Schools to support students to access dental care. This service can be covered by Medicare. Forms with more information have gone home this week or you can use the included QR code to register online.



DENTAL FOR SCHOOLS



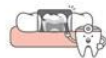
Scan the qr code to fill out the Consent form online instead



We are scheduled to visit on:

2nd June-13th June 2025

Help us fight dental decay this year at Elizabeth North Primary School by getting involved in our preventive check-ups. Please fill out your child's consent form as soon as possible to ensure they don't miss out!



Check-up & Clean

Have your child's teeth shining bright again! We will provide a check-up & professional clean. Here we will let you know if there are any areas that require attention.



Goodie Bags + Report

All participants receive a gift bag with essentials and some goodies. You will also have a take home oral health report with any concerns to monitor throughout the year



Visit with friends

Take the stress out of your child's dental visit while they visit with their friends and classmates. Our clinics are fitted with movies to watch while they wait.



E. parents@dentalforschools W. dentalforschools.com.au P. (08) 7225 8142

Food Support Services

Food Support Services

Pathway Community Centre
249 Milne Rd Modbury North 8395 1881
Ability to sign up to their hamper program
and receive hampers every 2 weeks

Food Bank Hub
130 Peachey Street, Davoren Park
Low cost groceries through referrals from:
Anglicare SA Elizabeth: 1800 061 551
Nunkunwarrin Yunti SA: 08 8406 1600
St Vincent De Paul: 1300 729 202
Uniting Communities: 08 8202 5846

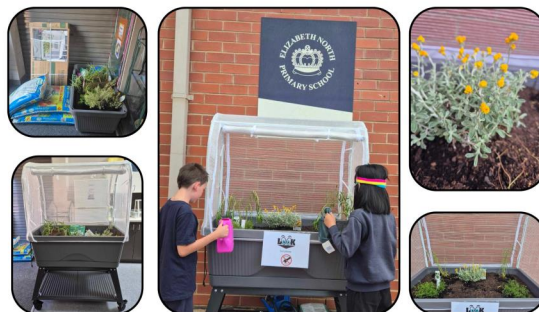
Northern Community of HOPE
Corner of Pritchard Street and Heytesbury Road, Davoren Park.
Assess Friday mornings from 11am. Can also stay for lunch which is
only \$4 for a two course meal

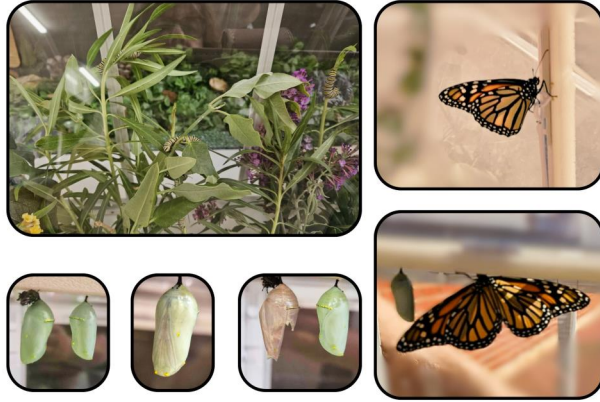
Elizabeth Church of Christ
Corner of Ashfield and Short Road, Elizabeth.
Free community lunch available on Tuesdays, Thursdays and Fridays
11:30am-12:30pm. Also some food available to take home

Elizabeth Seventh Day Adventist church
20 Peterswool Road, Elizabeth Park
Food hampers available Mondays and Thursdays at 11am
Need to show Centrelink card (concession or healthcare card)

ADRA Community Pantry
240 Peachy Road, Smithfield Plains
Monday to Wednesday 9am-3pm

Elizabeth North Primary School Butterfly Garden





Come and check out our butterfly garden outside Mrs Laver's science room! Thanks to the Woolworths Junior Landcare grant we have been able purchase a movable garden bed along with the soil and native butterfly attracting plants to fill it, as well as 10 caterpillars that we all got to watch turn into butterflies! Students have learnt about the life cycle of a monarch butterfly while watching it happen over the past 3 weeks. What a wonderful experience and life long memory.

Sports News

Sports Day Captains 2025 Congratulations

Warru Dingoes (Green)

Warru Dingoes Captains



3 - Caidence Rm 20



4 - Samuel Rm 21

Waru Dingoes Vice Captains



5 - Shifa Rm 20



6 - Nimr Rm 21

Kardi Emus (Yellow)

Kardi Emus Captains



7 - Natalie Rm 21



8 - Tristan Rm 22

Kardi Emus Vice Captains



9 - Harper Rm 20



10 - Lucas Rm 21

Nantu Roos (Red)

Nantu Roos Captains



11 - Emily Rm 21



12 - Hudson Rm 22

Nantu Roos Vice Captains



13 - Summer Rm 22



14 - Rilan Rm 20

Ngakudla Sharks (Blue)

Ngakudla Sharks Captains



15 - Ava Rm 21



16 - Nate Rm 22

Ngakudla Sharks Vice Captains



17 - Ava Rm 22



18 - Jamie Rm 21

Thank You

Thank you to Playford Schools Ministry Team and Paul for the delivery of a full variety of Hot Cross Buns for ENPS staff to enjoy for Easter.



19 - Paul and Mr Mathews

Library news

PREMIER'S READING Challenge

Is your child taking up the Challenge in 2025?

If so, there are some things you should know to get you prepared;

- * Student reading records are available from your child's teacher, or from the school PRC contact person, who is usually someone in the school library (ask your child's teacher).
- * The Challenge is to **read 12 books in total**.
 - Reception to Year 6, 8 of these books are to be from the Challenge booklists, available on our website, and 4 of their own choice.
 - Years 7 to 9, students read 4 books from the Challenge lists and 8 of their own choice.
 - Years 10 to 12, students read 12 books of their own choice, and these can include prescribed texts and any other texts from their studies.
- * Please ensure they fill in their student reading record as they read their books, get them signed off as they go and please make sure your child hands it in to their teacher or the school contact person by:

Friday 5 September.

- * Enjoy the Challenge!

Yours Sincerely,

Mark A. Williams
 Manager, Premier's Challenges
www.prc.sa.edu.au

Department for Education
 GPO Box 1152, Adelaide SA 5001
 Phone (08) 8226 2006
 Mobile 0421 584 016
 Courier R11/37A
 Email prc@sa.gov.au

PREMIER'S READING Challenge

For more information
 ☎ 08 8226 4300

For more information

☎ 08 8226 4300

✉ prc@sa.gov.au

 prc.sa.edu.au



Reading for the Challenge finishes on
5 September 2025



Government of
South Australia



OSHC



HAPPY HAVEN
OSHC

PUPIL FREE DAY
ELIZABETH NORTH
Friday, 20th June
6:30 am – 6:00 pm



KIDCHELLA
KIDCHELLA offers all-day fun with hair, arts, crafts, and a disco for kids (washable, don't worry).



BOOK TODAY
Bookings can be made through the Happy Haven OSHC Parent Portal. If your child is not currently enrolled with Happy Haven OSHC, you can do via the QR code link.

Note: Booking made after the 13th of June will incur a short notice booking fee. Before School Care & After School Care bookings do not automatically rollover.



 contactus@happyhaven.sa.edu.au  happyhaven.sa.edu.au  8155 5444

Occasional care



Elizabeth North Primary School

OCCASIONAL CARE
VACANCIES

Sessions: Tues, Thurs & Fri 8:30am-11:30am
Ages: 6 months-4 years

Enquiries:
☎ 8255 2327
✉ tamra.bedford416@schools.sa.edu.au

Term 2 calendar

<div>  <h1>Term 2 Calendar</h1> </div>					
DATES	MONDAY	TUESDAY	WEDNESDAY	THURSDAY	FRIDAY
Week 1 29/4 - 2/5	Pupil Free Day			2.1 Open Assembly	
Week 2 5/5 - 9/5				National Indigenous Totem's Carnival and Cultural Learning Day	9.30am to 3pm Tackling gear 3-4 Mother's Day Stall
Week 3 12/5 - 16/5	3.4 Spine Governing Council	VISION VAN			
Week 4 19/5 - 23/5			1.2pm to 3pm NSS The Track Cat	2.1 Open Assembly	Remembrance Day Celebration
Week 5 26/5 - 30/5	National Sorry Day	NATIONAL RECONCILIATION WEEK			
Week 6 2/6 - 6/6	NATIONAL RECONCILIATION WEEK				
	DENTAL FOR SCHOOLS				
Week 7 9/6 - 13/6	Public Holiday King's birthday			2.1 Open Assembly	
Week 8 16/6 - 20/6	3.4 Spine Governing Council	DENTAL FOR SCHOOLS			
Week 9 23/6 - 27/6				Year 6 Market Day	
Week 10 30/6 - 4/7	SWIMMING WEEK				
	Classes going swimming: Re 1, Re 2, Re 3, Re 4, Re 5, Re 7, Re 8, Re 9, Re 10, Re 12, Re 23, Re 25, Re 30			2.1 Open Assembly	2.0 Open Early dismissal

2025

Finance update



School fees payments can be made via the Qkr app, eftpos or cash or via bank transfer (bank account details are on the bottom of our invoices and statements).

If you are still yet to apply for school card, please do so by heading to www.sa.gov.au

Finance Information

Attention parents and carers,

2025 Materials and Service charges have now been invoiced to all students. Please note the following information;

- All students have been issued a \$300 original invoice
- All students will receive the \$200 government subsidy, therefore the balance will be \$100 per student
- All families will be issued with a statement showing that the subsidy has been applied

Please note: Students approved for School Card assistance are not eligible to receive this rebate, as they are already exempt from paying Materials and Service fees.

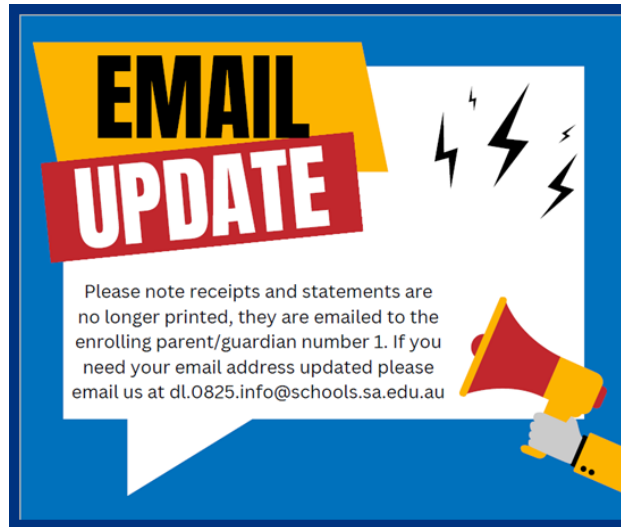
If you are yet to apply for your 2025 School Card, please do so at www.sa.gov.au.

Payment options for your convenience;

- Download the free Qkr! app and pay by credit card
- Bank transfer (details on invoices)
- Eftpos or Cash at the front office

We also offer payment plans, please contact our office on 8255 2327.

<https://www.sa.gov.au/topics/education-and-learning/financial-help-scholarships-and-grants/school-card-scheme>



Medication

MEDICATION



If your child/ren needs to have medication at school it must be brought to Student Services and discussed with our staff. It is a Department for Education requirement that a Medication Agreement form is provided and must be completed by a GP or specialist. Staff are not able to administer medication unless this form is provided to us.

Medication must be provided with clearly labelled instructions, including the expiry date.

Asthma Care Plans must be provided for a child to receive Ventolin. Ventolin must be labelled with a label from the chemist and you must also provide a spacer labelled with your child's name.

Lost property



Our lost property box is continuously overflowing. Please ensure names are written on all jumpers and hats so they can be returned to students. Our lost property box is located in the library and is able to be checked before school each day.

Community news



**SPECIAL ENTRY DANCE AUDITIONS
APPLICATIONS NOW OPEN**



E: dl.1834.info@schools.sa.edu.au
P: (08) 8282 6400



JINDOKAI SHOTOKAN KARATE
 Traditional Japanese
 Shotokan Karate



Empowering kids
through real Karate..
the Jindokai way!







REGISTRATIONS OPEN



KIDS TAEKWONDO

Resilience · Confidence · Discipline · Fitness

- Classes available from age 5+
- Self-Defence and Anti-Bullying Skills
- Safe, Non-Contact Training Environment
- Friendly, Fully Qualified WWCC Instructors
- Approved Sports Voucher Provider
- Recognised Olympic Sport



Why Choose World Taekwondo

Our structured classes will help benefit kids at school, at home, and throughout life. Your child will grow stronger, happier, and more capable — all in a safe, supportive environment.

Beginners Welcome - Enrol Now!

Enquiries: info@worldtaekwondo.com.au
Website: www.worldtaekwondo.com.au
Phone: 0412 909 500

Give your child the lifelong gift of World Taekwondo!



ONE-ON-ONE PARENTING SUPPORT

- wanting to improve your relationship with your child and can't attend group sessions?
- confused about what is being asked of you and how to get support?

Sessions can include general parenting and wellbeing support, case plans and referral pathways.

Mondays to Wednesdays

Dads Business
Elizabeth Rise Shopping Centre
26 Hamblynn Rd, Elizabeth Downs

Appointments via:

08 8412 9500 | avlahos@centacare.org.au
Bookings essential.

• centacare.org.au



find out more

Due to the nature of our services, we are unable to accommodate children at the Dads Business activities.

playford
communities for
children +

ANGLICARE SA
Together we change lives.

Funded by Australian Government Department of Social Services. Visit www.dss.gov.au for more information.



Get up to \$500 for education costs

Achieve a savings goal for 10 months,
and **ANZ will match it up to \$500.**

To be eligible, you need to meet all of these requirements:



18 years
or older



A regular
income
(you or your
partner)



Attend
free online
financial
education
workshops



Are studying
yourself or
have a child
at school, or
starting next
year



Current
Health Care
or Pensioner
Concession
Card

Saverplus.org.au

1300 610 355



Saver Plus was developed by ANZ and the Brotherhood of St Laurence and is delivered in partnership with The Smith Family and Berry Street.
It is funded by ANZ and Department of Social Services.



Could Saver Plus
help with your
education costs?

Saver Plus Information Sessions

We are running Information sessions for anyone thinking about joining the program and wants to learn more about how Saver Plus works.

Eligibility, income and participation criteria. To find out more head to <https://www.thesmithfamily.com.au/>.

To Register please use the QR Code or Zoom Link Below.



[Click here to Register](#)

saverplus.org.au
1300 610 355



Saver Plus was developed by ANZ and the Brotherhood of St. Laurence and is delivered in partnership with The Smith Family and Berry Street. It is funded by ANZ and Department of Social Services.



Could
Saver Plus
help
with your
education
costs?

Google

Q Saver Plus YouTube

to see our quick
explainer video and find
out if you're eligible.



Saver Plus was developed by ANZ and social justice organisation the Brotherhood of St Laurence (BSL).

It is delivered in partnership with not-for-profit organisations The Smith Family, Berry Street and BSL.

ANZ and the Department of Social Services fund it.

saverplus.org.au

Terms, conditions and eligibility criteria apply.



Contact Us

ELIZABETH NORTH PRIMARY SCHOOL

141 WOODFORD ROAD

ELIZABETH NORTH SA 5113

8255 2327

DL.0825.INFO@SCHOOLS.SA.EDU.AU